

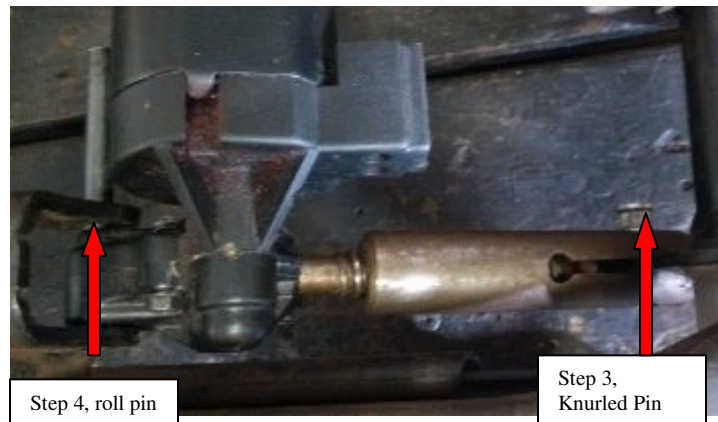
# TWO MEN ONE GARAGE

www.2men1garage.net

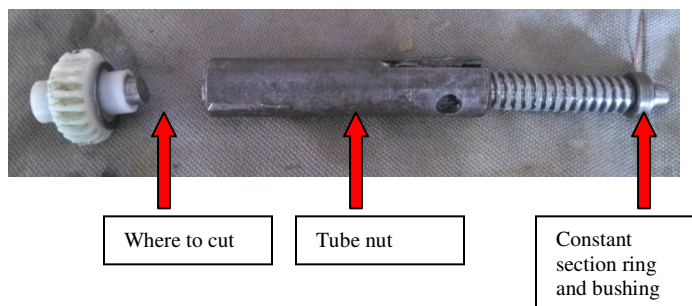


## 99 – 04 Jeep Grand Cherokee Vertical Adjustment Motor Replacement

1. Remove the seat and power seat assembly from the vehicle.
2. Unplug the electrical connector from the motor.
3. Drive out the knurled pin holding the tube nut to the seat frame lift lever. Be careful to not bend the lever. You can try to support the tube nut with a socket while driving the pin out.
4. Drive out the roll pin which secures the motor to the frame.



5. You will have to reuse your tube nut from the old shaft. A factory constant section ring (thick wire snap ring) holds a bushing on the end of the shaft to limit how high the seat goes. If removing the section ring becomes a problem, you can cut the old shaft close to the motor and unscrew the tube nut from the cut end. I prefer cutting the shaft.



6. Once the tube nut has been threaded on the replacement shaft, align the pre-drilled hole in the shaft with the opening on the side of the tube nut and drive the 1/8 spring pin in the hole.



Predrilled hole aligned and pin inserted

7. Make sure the pin is centered in the shaft so it doesn't bind on the inside of the tube nut as the shaft spins. I screw the tube nut to the fully extended position and back to ensure it will rotate with the pin inside.



Spring pin centered with diameter of shaft.

8. Install the motor in the reverse order you took it off.

Please contact me with any questions.

[sales@2men1garage.net](mailto:sales@2men1garage.net)

Cell 912 667 4198